

# INTRAOURAL SCANNING TIPS

Ensure you get the best quality scan

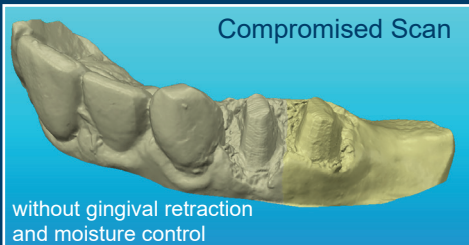
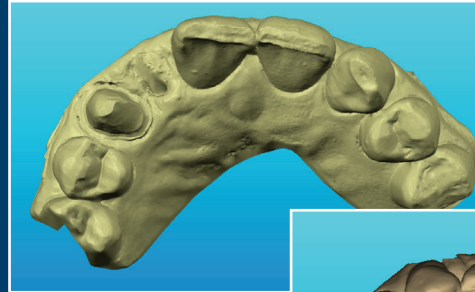
## ANTERIORS

All anterior teeth must be scanned in order to adapt to existing dentition and size.

## POSTERIORS

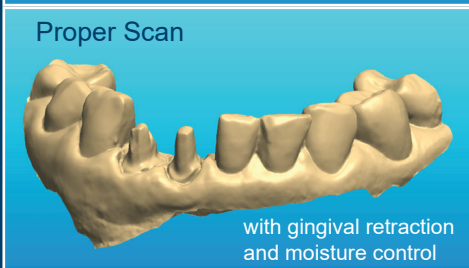
Scans must include at least two adjacent teeth on the mesial and distal of prepared tooth

For scans involving existing partials or appliances, a pre-preparation scan must be included to ensure proper fit.



## Gingival Retraction

- Correct gingiva retraction enables accurate scanning of margin line
- If margin is subgingival, scanner will have difficulty capturing the margin unless retraction technique is precise
- The two-cord retraction technique is highly recommended for a visible margin line



## Moisture Control

- Ensure teeth are dry with use of compressed air
- Dry the interproximal and gingival areas of arch
- Use cotton tips, rolls, and saliva ejectors to keep mouth dry during scanning
- Keep scanner wand clean and dry

DO NOT submit a case with any missing data at the margins; this can compromise the fit. Scan at least 4 opposing teeth for the bite.

Stay tuned for our follow-up Tech Tip:  
*Common Scanning Mistakes and How to Prevent Them*



Quality you trust, from people who care.™

EdmondsDentalProsthetics.com



800-462-3569

To receive your educational materials via email, go to <http://eepurl.com/cwPiIL>. Or call 417-881-8572.

