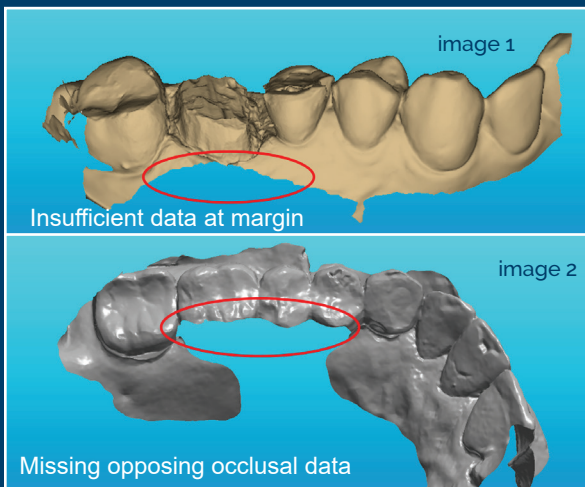


INTRAOURAL SCANNING

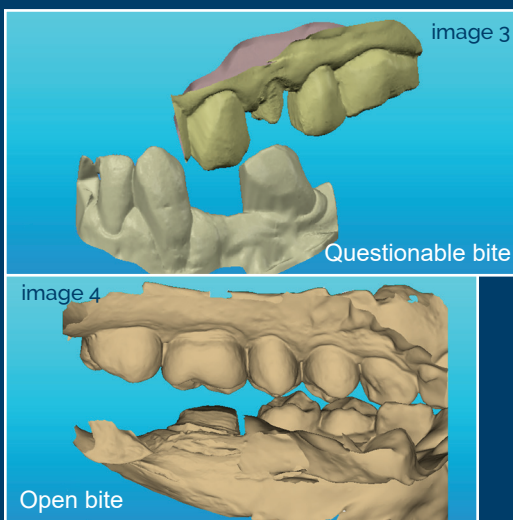
Common Scanning Mistakes and How to Avoid Them



Missing or insufficient data

Results: Missing data at the margins, could result in open, short margins or the inability to produce a model. (image 1)
Missing data at opposing dentition could result in high crowns and bites being off. (image 2)

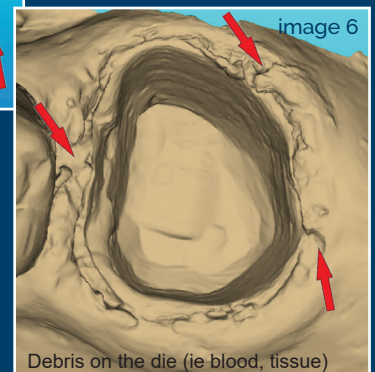
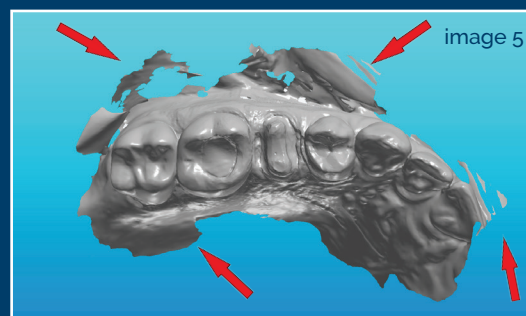
Solution: Scan well beyond the margin area, ensure a complete scan of dentition on both arches. A full arch scan is recommended for anterior restorations to match tooth shape and contours.



Bites & Articulations

Results: Bites improperly articulated will cause either high occlusions or crowns to be out of occlusion. This increases the chances for remakes. (images 3, 4)

Solution: Verify bite is correct and scan is aligned properly. Re-scan as needed. Anterior bites should include bicuspid for solid articulation purposes



Debris

Results: Debris left on dies will result in ill-fitting crowns and open margins; debris can cause bites to not occlude properly and hinder our ability to produce a quality model. (images 5,6)

Solution: For quality scans, fluid control and retraction is a must for keeping tissue away from margins; we highly recommend two-cord retraction. Most systems have an editing tool that you can use to remove the debris.



Quality you trust, from people who care.SM

EdmondsDentalProsthetics.com



800-462-3569

For questions, please call
Sheila McMasters,
Digital Supervisor

